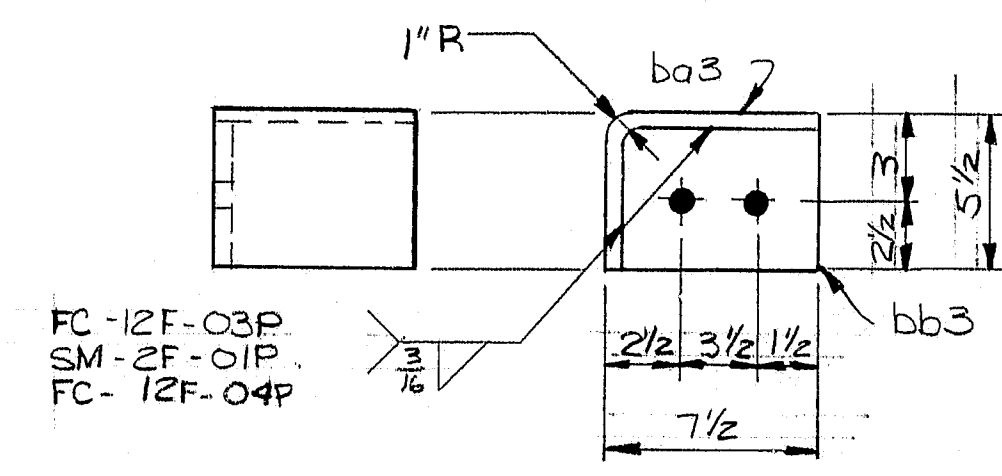
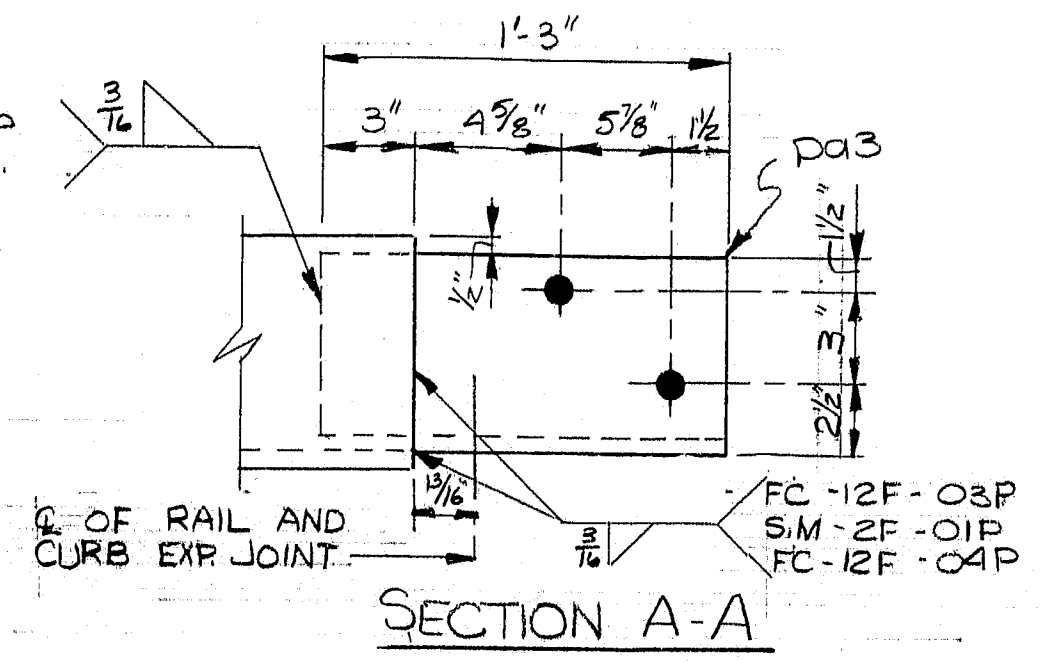
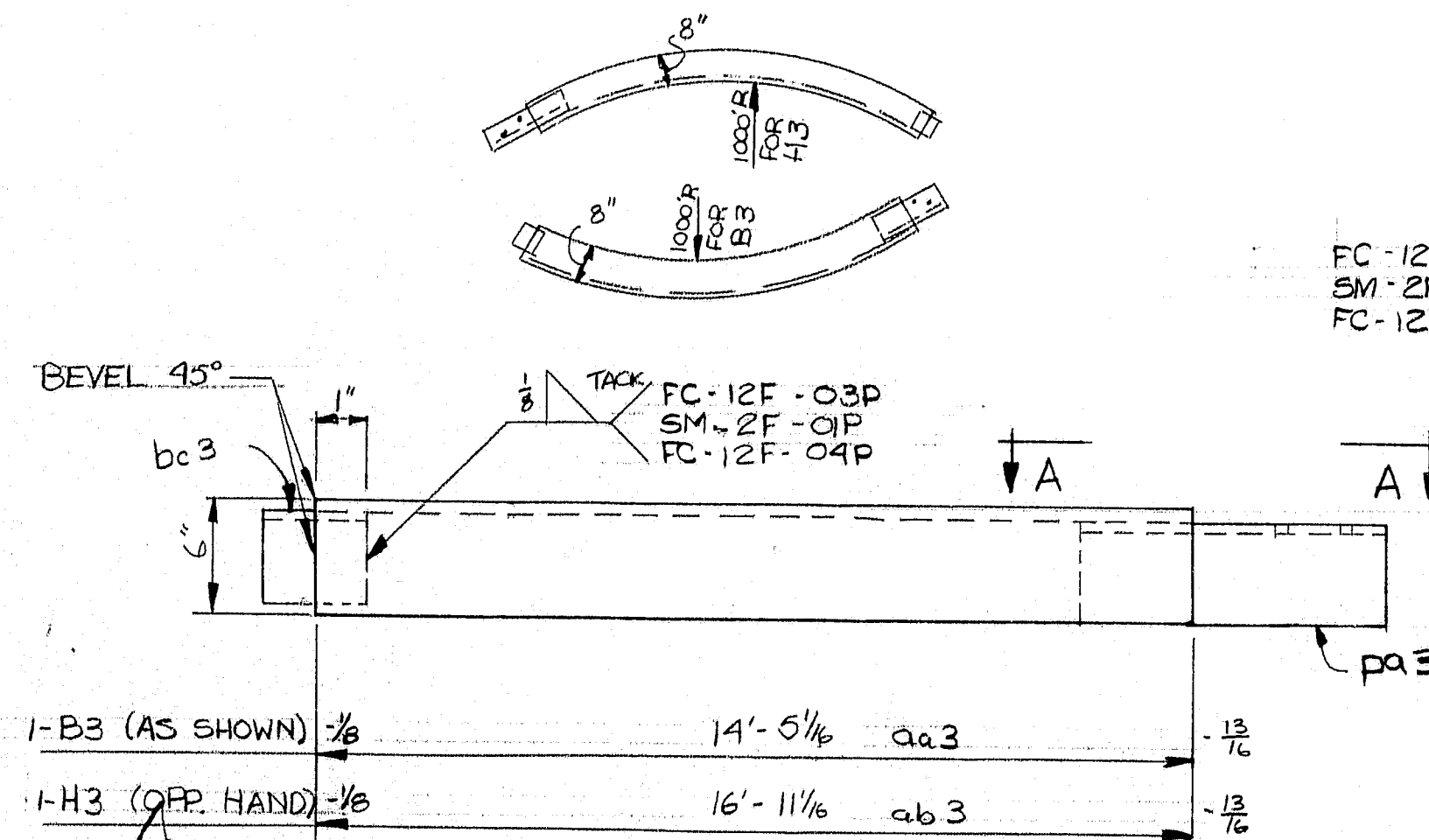
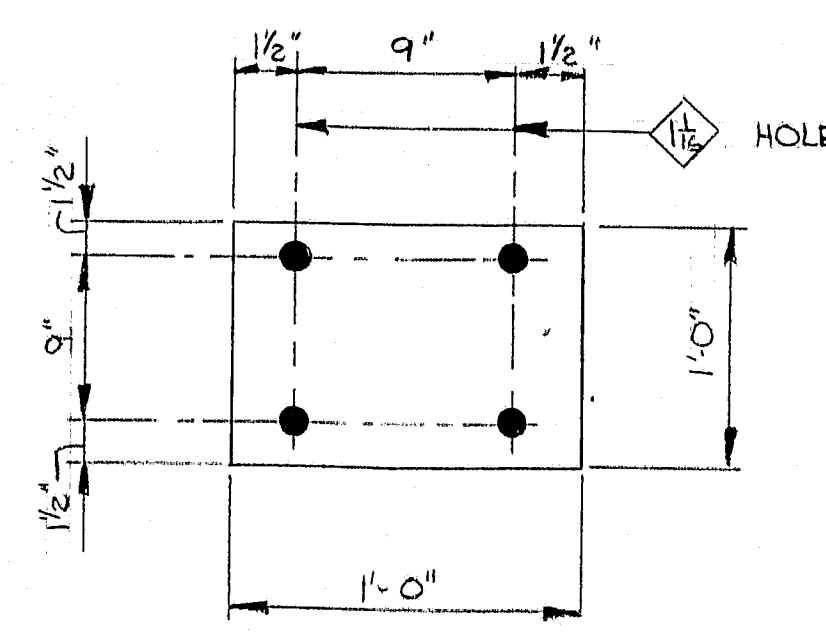
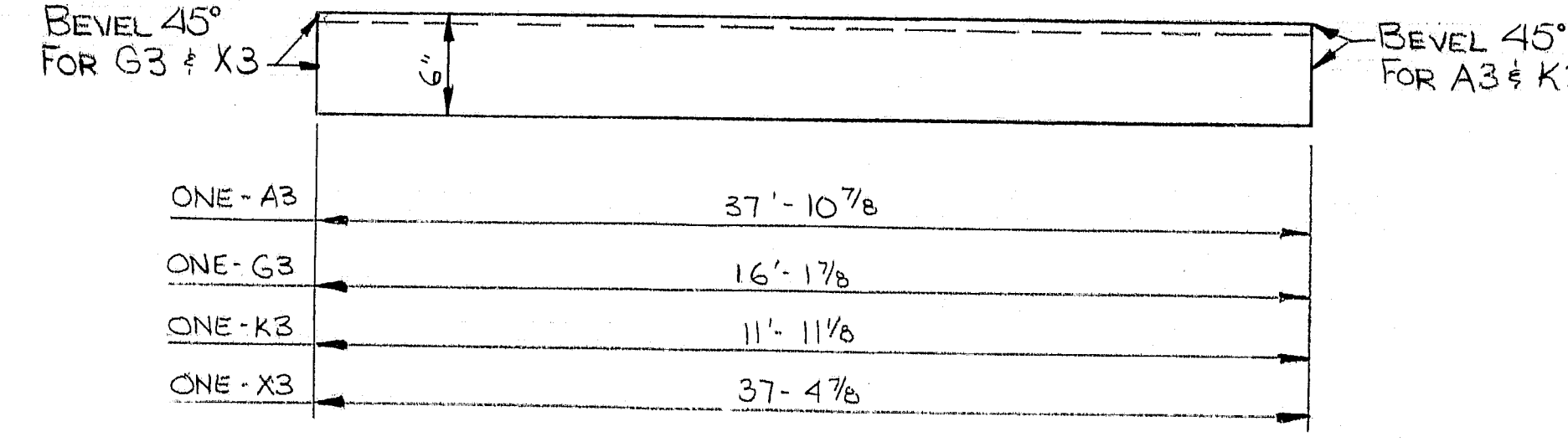
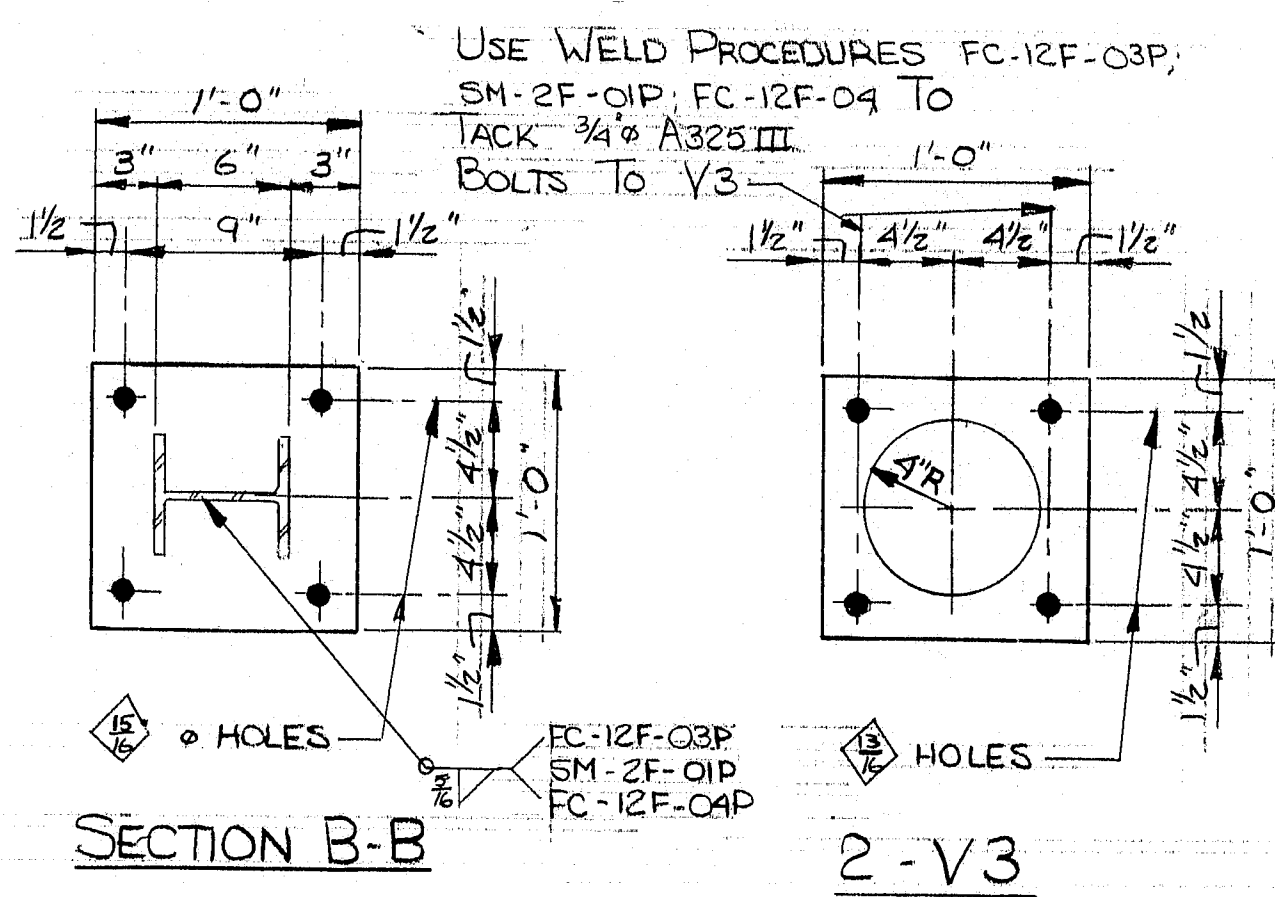
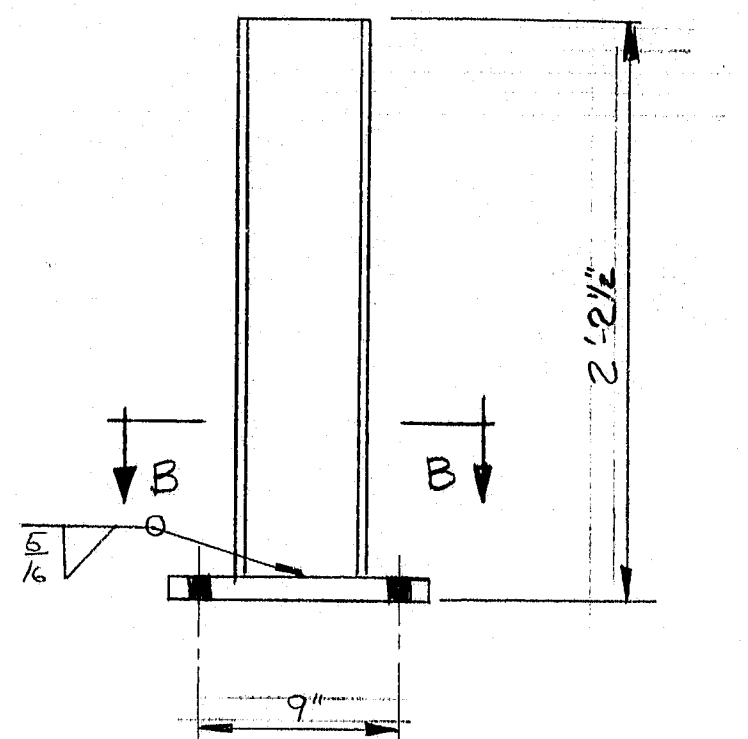
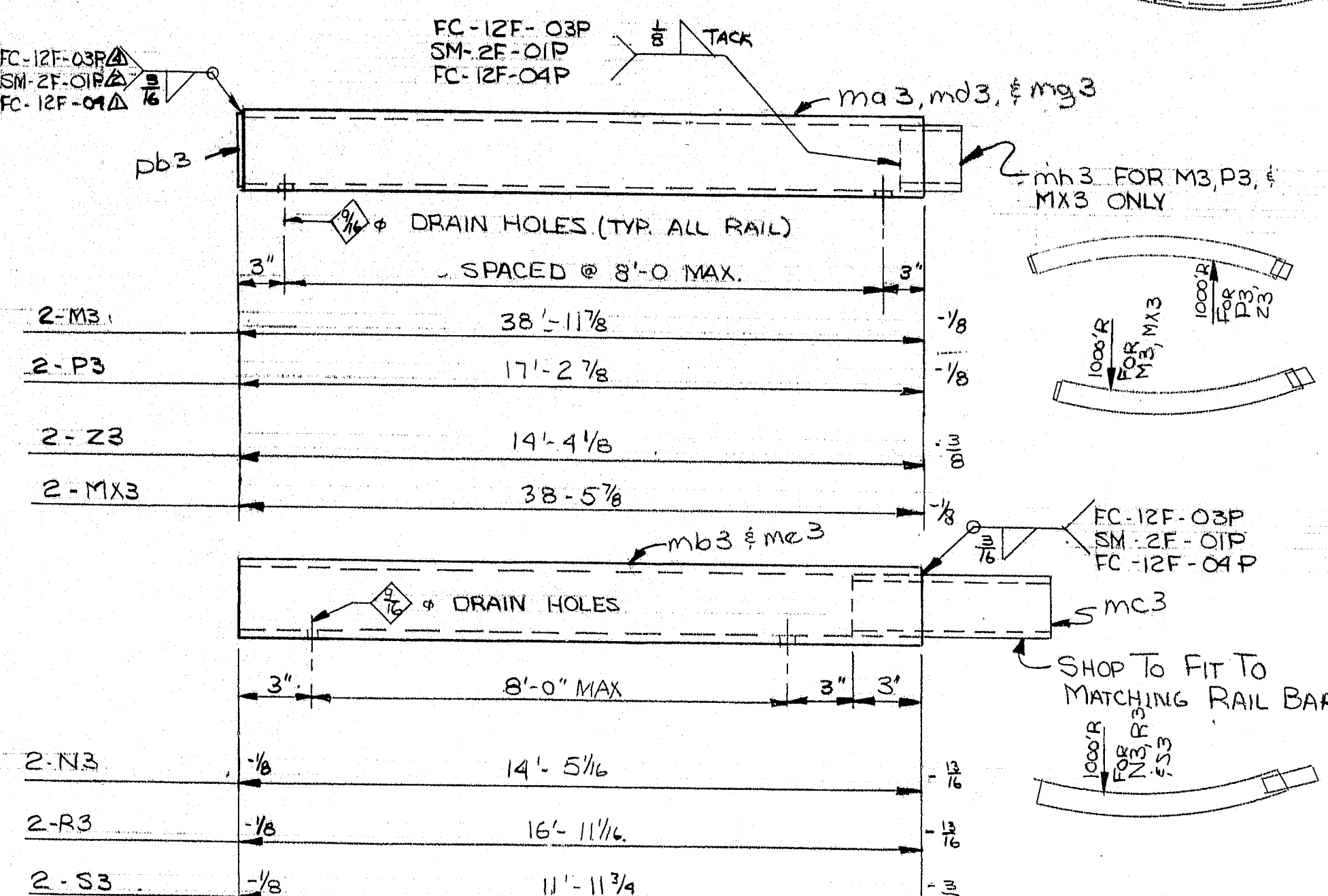
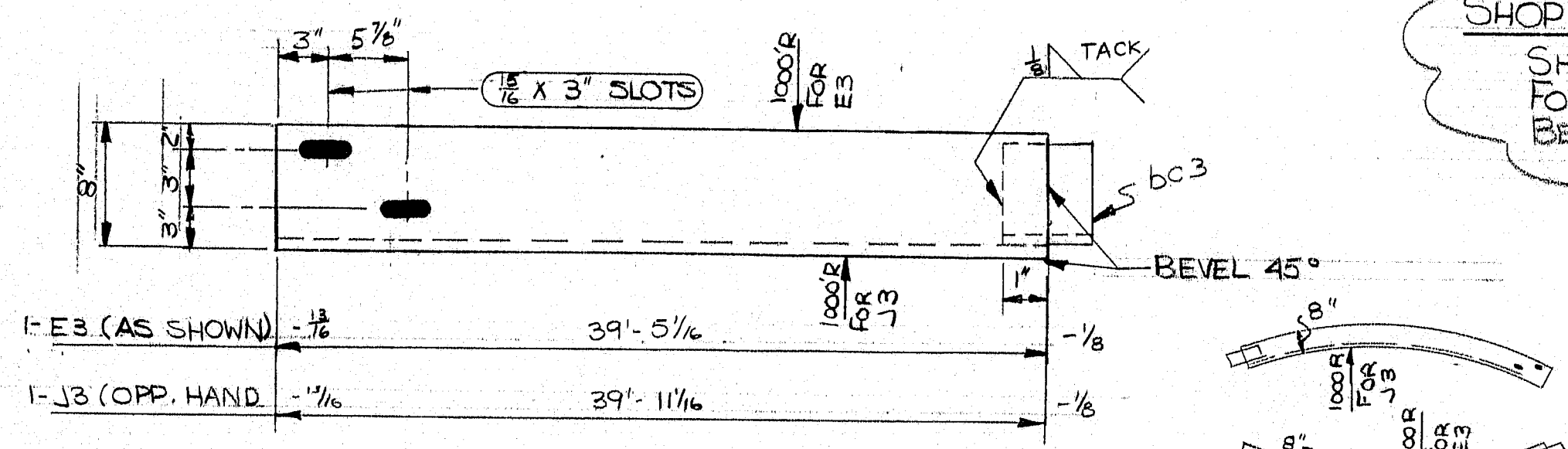


| | |
|---------------|--------------|
| REV. Δ | PJC |
| CHK'D | TK 12/12/83 |
| DRWN | JHS 11-30-83 |



SHOP NOTE:
SHOP TO PREP ENDS NOTED
FOR FIELD WELD WITH A 45°
BEVEL.



MATERIAL SCHEDULE

| SHIPPING MARK | NO. POS. | SUB-ASSEM. | SHAPE | LENGTH FT. IN. | 0 OR S | OUT FROM NO. FT. IN. | REMARKS | WT. |
|---------------|----------|------------|----------------------|----------------|--------|----------------------|------------------------------|----------|
| A3 | 1 | | L8X6X1/2 | 37 10 7/8 | 1 | 40 0 | BEVEL END FOR FIELD WELDING | 272 |
| B3 | 1 | | CURB EXP. SECTION | | | | (360) | |
| | 1 | a23 | L8X6X1/2 | 14 5 1/8 | 1 | 40 0 | BEND | 332 |
| | 1 | a63 | R 1/2 X 12 | 1 3 | 1 | 40 0 | BEND/HOLES | 26 |
| | 1 | b23 | BAR 2 X 1/4 | 1 0 | 1 | 40 0 | BEND ST | 2 |
| C3 | 2 | | As SHOWN | | | | BEND ST (15) | |
| CX3 | 2 | | OPP. HAND | | | | BEND ST (16) | |
| | 4 | a23 | BAR 6 X 1/2 | 1 0 1/2 | 1 | 40 0 | BEND ST | 43 |
| | 4 | b23 | BAR 5 X 1/2 | 0 7 | 1 | 40 0 | BEND ST | 20 |
| E3 | 1 | | L8X6X1/2 | 39 5 1/8 | 1 | 40 0 | SLOTS/BEND | 909 |
| | 1 | b23 | BAR 2 X 1/4 | 1 0 | 1 | 40 0 | BEND ST | 2 |
| G3 | 1 | | L8X6X1/2 | 16 1 7/8 | 1 | 40 0 | BEVEL END FOR FIELD WELDING | 372 |
| H3 | 1 | | CURB EXP. SECTION | | | | (417) | |
| | 1 | a23 | L8X6X1/2 | 16 11 1/8 | 1 | 40 0 | BEND | 389 |
| | 1 | a63 | BAR 1/2 X 12 | 1 3 | 1 | 40 0 | BEND/HOLES | 26 |
| | 1 | b23 | BAR 2 X 1/4 | 1 0 | 1 | 40 0 | BEND ST | 2 |
| J3 | 1 | | L8X6X1/2 | 39 11 1/8 | 1 | 40 0 | SLOTS/BEND | 918 |
| | 1 | b23 | BAR 2 X 1/4 | 1 0 | 1 | 40 0 | BEND ST | 2 |
| K3 | 1 | | L8X6X1/2 | 11 11 1/8 | 1 | 40 0 | BEVEL ENDS FOR FIELD WELDING | 274 |
| M3 | 2 | | Ts 4X4X1/4 | 38 11 1/8 | 2 | 40 0 | BEND | 975 |
| MX3 | 2 | | Ts 4X4X1/4 | 38 5 1/8 | 2 | 40 0 | BEND | 962 |
| | 4 | a23 | R 1/4 X 3/8 | 0 3/8 | 1 | 40 0 | BEND | 41 |
| | 4 | m23 | Ts 3/2 X 3/8 X 1/4 | 0 2 | 1 | 40 0 | BEND | 7 |
| N3 | 2 | | RAIL EXP. SECTION | | | | (192) | |
| | 2 | m23 | Ts 4X4X1/4 | 14 5 1/8 | 1 | 40 0 | BEND | 361 |
| | 2 | m23 | Ts 3/2 X 3/8 X 1/4 | 1 0 | 1 | 40 0 | BEND | 22 |
| P3 | 2 | | RAILS | | | | BEND | (218) |
| | 2 | m23 | Ts 4X4X1/4 | 17 2 3/8 | 1 | 40 0 | BEND | 413 |
| | 2 | a23 | R 1/4 X 3/8 | 0 3/8 | 1 | 40 0 | BEND | 41 |
| | 2 | m23 | Ts 4X4X1/4 | 39 5 1/8 | 1 | 40 0 | BEND | 986 |
| QX3 | 2 | | Ts 4X4X1/4 | 39 11 1/8 | 1 | 40 0 | BEND | 999 |
| R3 | 2 | | RAIL EXP. SECTION | | | | (262) | |
| | 2 | m23 | Ts 4X4X1/4 | 16 11 1/8 | 1 | 40 0 | BEND | 423 |
| | 2 | m23 | Ts 3/2 X 3/8 X 1/4 | 1 0 | 1 | 40 0 | BEND | 22 |
| Z3 | 2 | | RAILS | | | | BEND | (186) |
| | 2 | m23 | Ts 4X4X1/4 | 14 3 3/8 | 1 | 40 0 | BEND | 358 |
| | 2 | a23 | R 1/4 X 3/8 | 0 3/8 | 1 | 40 0 | BEND | 41 |
| S3 | 2 | | Ts 4X4X1/4 | 11 11 1/8 | 1 | 40 0 | BEND | 300 |
| | 2 | m23 | Ts 3/2 X 3/8 X 1/4 | 1 0 | 1 | 40 0 | BEND | 22 |
| FIELD | 4 | | 3/4" A325 III | 0 2 1/2 | 1 | 40 0 | W/ WASH & HEAVY NUT | |
| | 8 | | 5/8" A325 III | 0 6 | 1 | 40 0 | W/ WASH & HEAVY NUT | |
| | 132 | | 1" A325 III WASHER | | 1 | 40 0 | W/ WASH & HEAVY NUT | |
| | 8 | | 3/4" A325 III WASHER | | 1 | 40 0 | W/ WASH & HEAVY NUT | |
| TOTAL WEIGHT | | | | | | | | 12,678 # |

PRINT DISTRIBUTION

FA 12-12-83

EA 1-27-84

FB 2-16-84

DDPR 2-23-84

SHOP 3-1-84

MATERIAL A 588 UNO

BOLTS 3/4" A325 III UNO

SURFACE PREP SSPC - SP6

PRIMER

FINISH

HOLES 1/2" A UNO

SEE WELDING PROCEDURES

REF. DWG. MDOT # 21

MAINE-CASCADE IRON WORKS

BAKER STREET, CLINTON, MAINE 04927

PHONE 207-428-2671

DESCRIPTION RAIL & CURB DETAILS

PROJECT CHANDLER RIVER BRIDGE BH-044-1(19)

LOCATION JONESBORO, MAINE

DESIGNER M.D.O.T.

CUSTOMER DANA TRUCKING

REV A

CHK'D J.R. 11-12-83

DRWN JHS 12-1-83

JOB NO. 83-532-1

DWG. NO. 3

REV.

R89-23

| MATERIAL SCHEDULE | | | | | | | | | | |
|-------------------|----------|------------|-----------------------|--------|-------|---------|----------|----------|----------------------------------|-----|
| SHIPPING MARK | NO. PGS. | SUB-ASSEM. | SHAPE | LENGTH | | O OR S | CUT FROM | | REMARKS | WT. |
| | | | | FT. | IN. | | NO. | FT. | | |
| T3 | 2 | | SURFACE MOUNTED POSTS | | | | | | | |
| | 2 | mj3 | W 6 X 15 | 2 | 1 1/2 | STK | 1 | 6 | 7 (Rough) | 64 |
| | 2 | p c 3 | R 1 X 12 | 1 | 0 | * 22316 | 1 | 18 X 1/4 | G HOLES | 52 |
| V3 | 2 | | R 1/4 X 12 | 1 | 0 | STX | | | HOLES A36 | 20 |
| B SHOP | | | 3/4 @ A325 III | 0 | 8 | * 22322 | | | TACK ON | - |
| W3 | 2 | | PAD 1/8 X 12 | 1 | 0 | * 22376 | | | HOLES RUBBER | - |
| | | | | | | | | | PER PARA 713.03 | |
| X3 | 1 | | L8 X 6 X 1/2 | 37 | 4 7/8 | * 31443 | 1 | 40 | PP. 441. MDOT STD SPEC. | |
| | | | | | | | | | REND BEVEL END FOR FIELD WELDING | 86 |

R89-24